

HYDRAULIC

MINI POWER PACKS

Hydraulic Motor

Hydraulic Pump

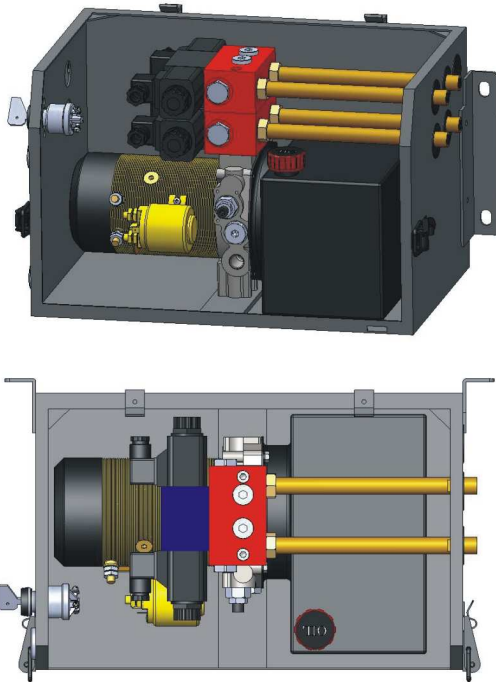
Hydraulic Valve

Hydraulic Accessory



TYPICAL TYPE

- WING BODY ①



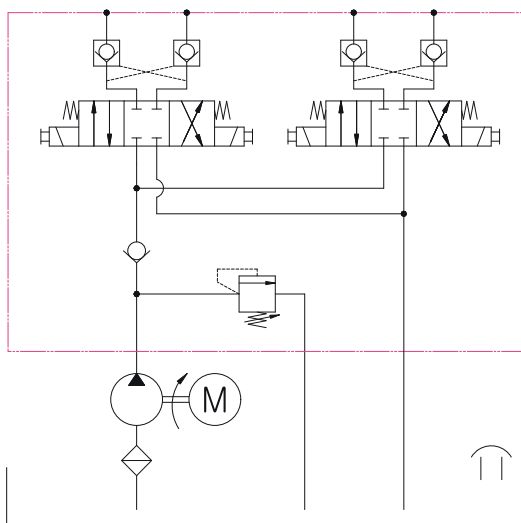
Description

Designed for dual power up-hold-power down application such as WING BODY on truck.

In the off position, the unit holds steady directional valves running independently of each other, allowing for two separate system functions.

Features include an adjustable relief & load-holding P.O check valve.

Power Pack for *WING BODY* ①



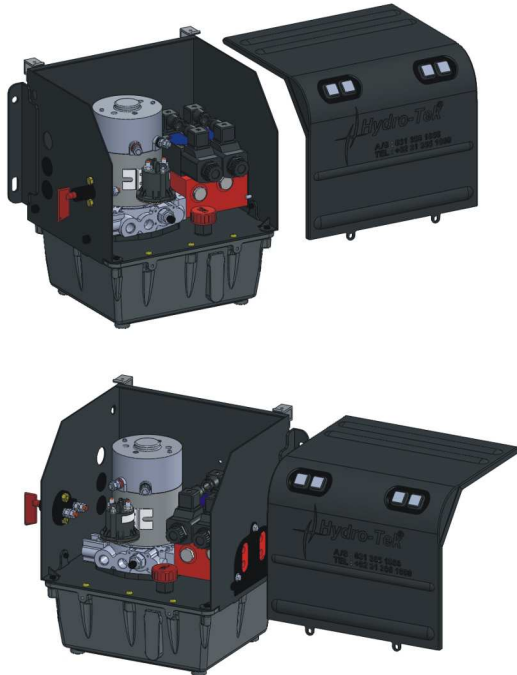
Hydraulic Circuit



Application - *WING BODY* ①

TYPICAL TYPE

- WING BODY ②



Description

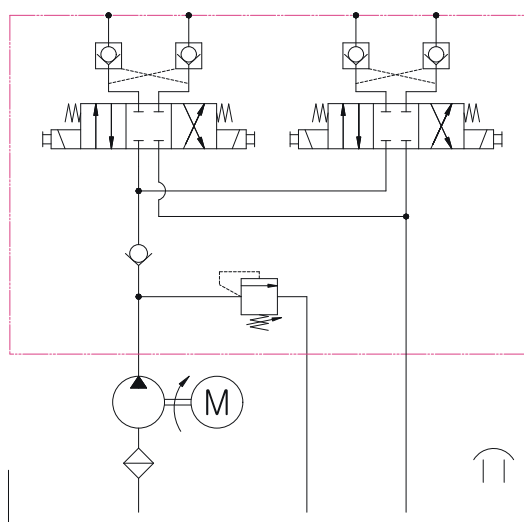
Compact & light designed power unit for dual power up-hold-power down application such as WING BODY on truck.

In the off position, the unit holds steady directional valves run independently of each other, allowing for two separate system functions.

Features include an adjustable relief & load-holding P.O check valve.

Material : Plastic

Power Pack for *WING BODY* ②



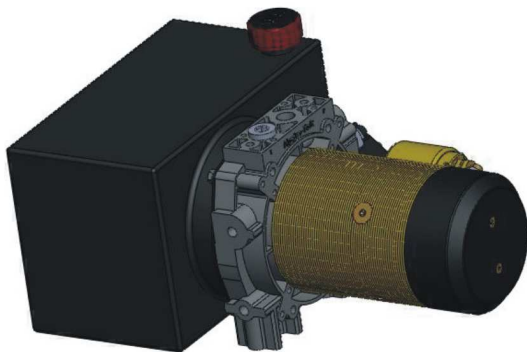
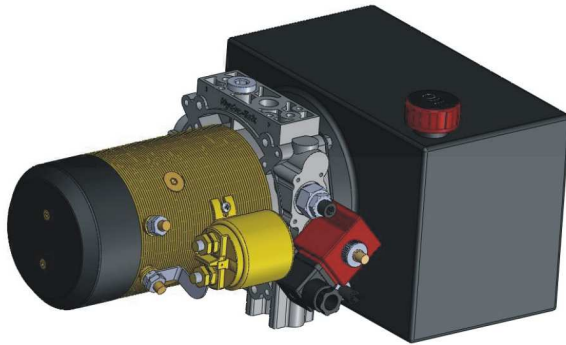
Hydraulic Circuit



Application - *WING BODY* ②

TYPICAL TYPE

- *TIPPER*



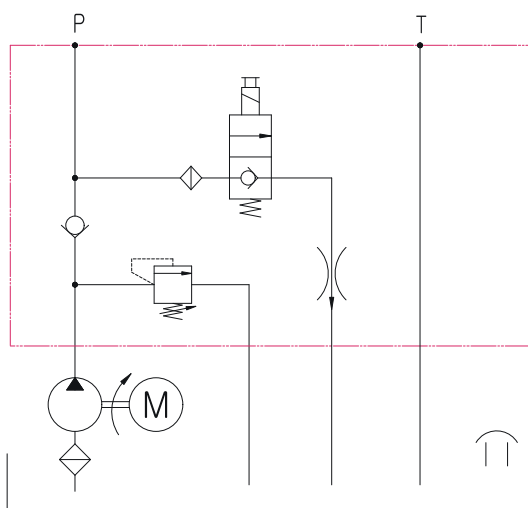
Description

Designed for TIPPER for 12V DC & 24V DC power up/gravity down via cartridge type of 2 way 2 position valve.

Power up/power down (power lift, hold & power down) via cartridge type of 4 way 3 position valve is available.

New designed block allows the compact size of double acting (power up/power down) power pack without additional manifold block on the endhead.

Power Pack for *TIPPER*



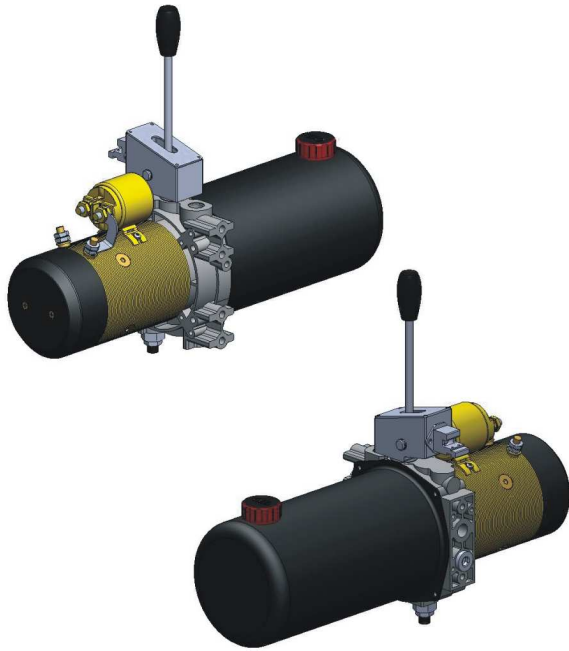
Hydraulic Circuit



Application - *TIPPER*

TYPICAL TYPE

- *STACKER*

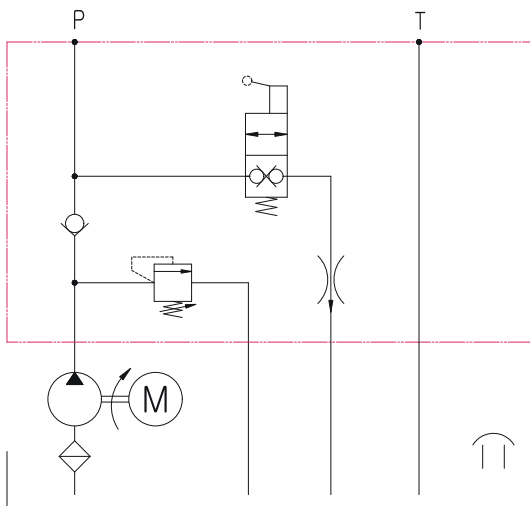


Description

Hydro-Tek manufacturers 12V and 24V DC power packs come in Lever type for basic power up/gravity down.

STACKER Power up/gravity down is controlled by manual lever and lowering speed is also controlled by lever angle.

Power Pack for *STACKER*



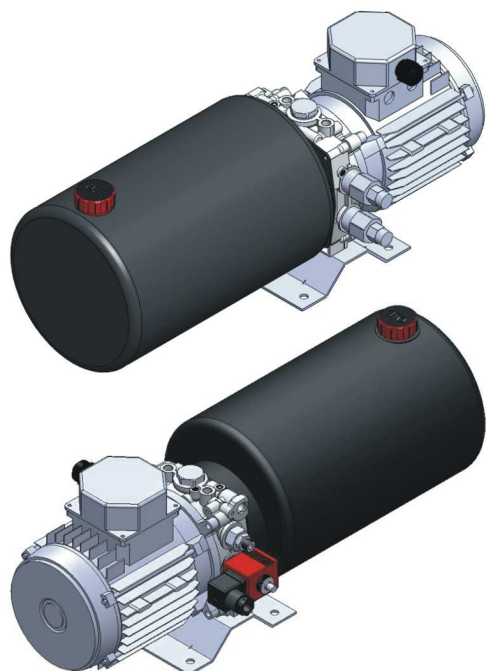
Hydraulic Circuit



Application - *STACKER*

TYPICAL TYPE

- DOCK LEVELER



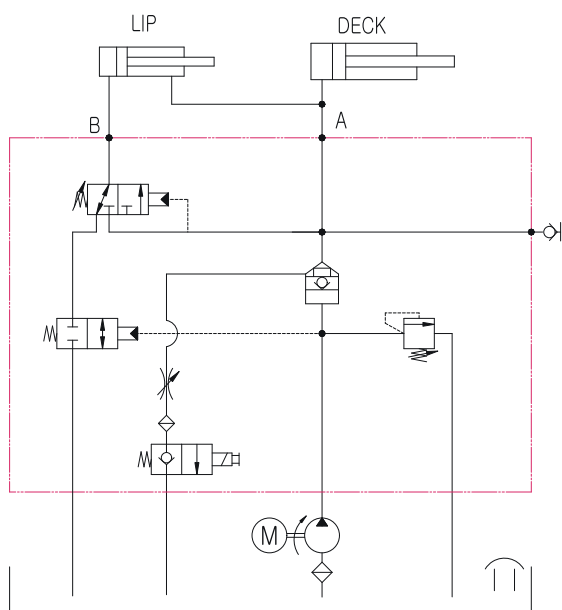
Description

Hydro-Tek supplies various circuits of DOCK LEVELER system power units.

Typical circuit is that after powering the platform to its full height a sequence valve operates to redirect the oil flow to extend the lip.

The valve ensures the lip remain extended until pressure on the main lift arm has ceased.

Power Pack for *DOCK LEVELER*



Hydraulic Circuit



Application - *DOCK LEVELER*

TYPICAL TYPE

- CARRIER FOR AGRICULTURE



Description

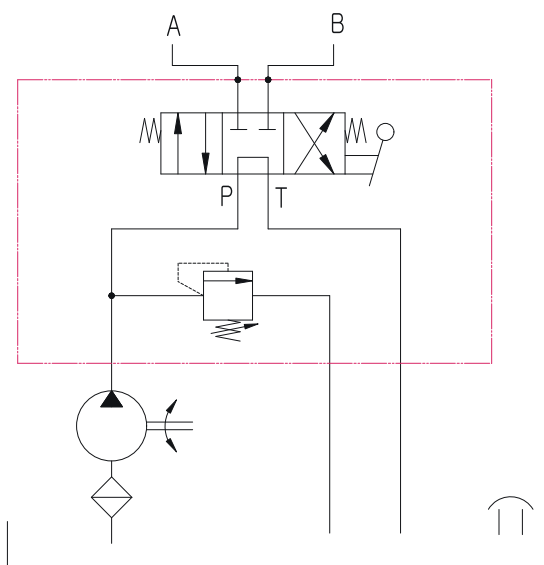
Power pack operated by engine.

As a single acting function, power up-gravity down is available.

However, Hydro-Tek provides multifunctional power pack with cartridge type valves and manifold blocks.

For additional requirements, contact Hydro-Tek technical service.

Belt-driven Power Pack for *Carrier for Agriculture*



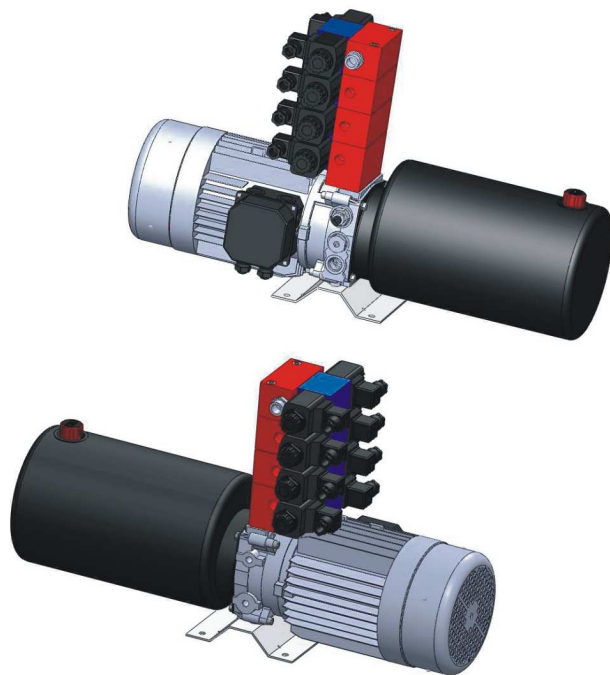
Hydraulic Circuit



Application - *Carrier for Agriculture*

TYPICAL TYPE

- TIRE CHANGERS

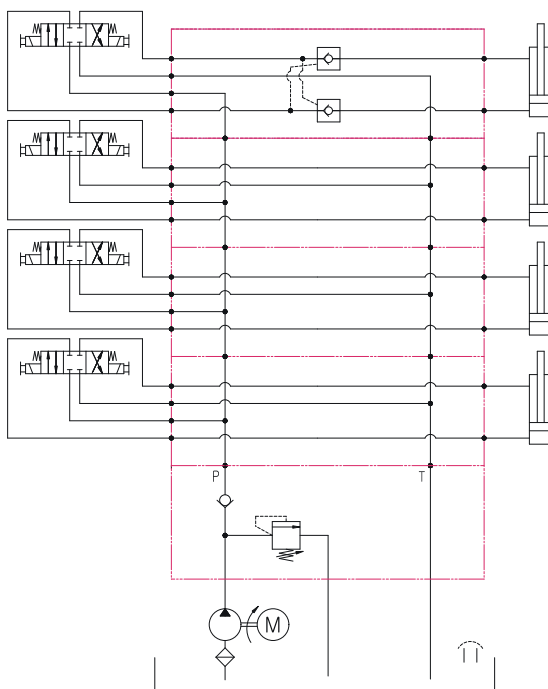


Description

Power pack for TIRE CHANGER.
built with multiful double acting manifold
blocks and Cetop3 valves.

110V, 220V (single phase) or 380V
three phase AC motor is applicable and
even custom-designed motor is feasible.

Power Pack for *TIRE CHANGERS*



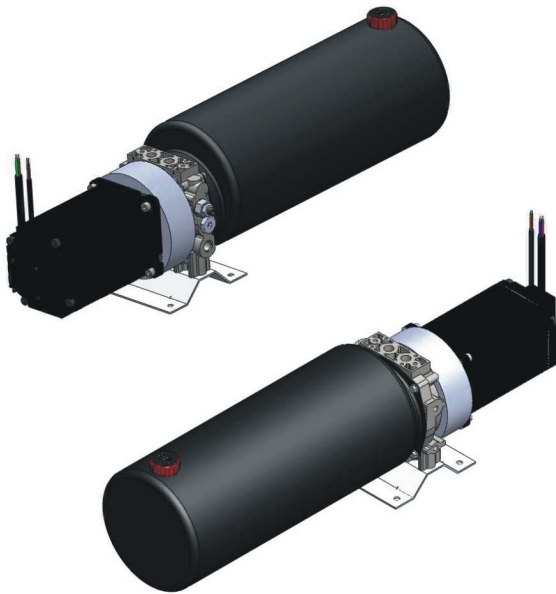
Hydraulic Circuit



Application - *TIRE CHANGERS*

TYPICAL TYPE

- POWER STEERING

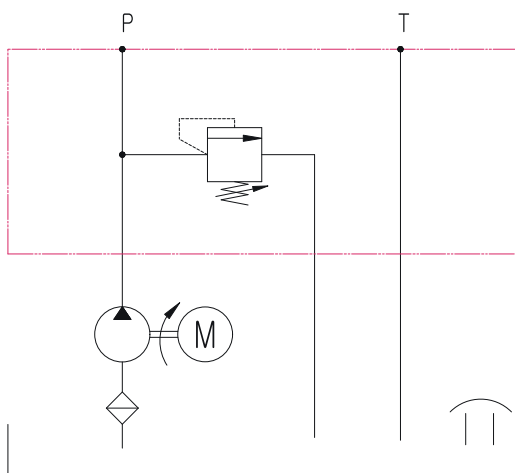


Description

Hydro-Tek newly developed brushless motor power pack for 24 hours continuous working.

Currently 48V, 0.75kw motor is available and the unit is especially for low pressure application but continuously long-running application such as POWER STEERING for car driving wheel.

Power Pack for *POWER STEERING*



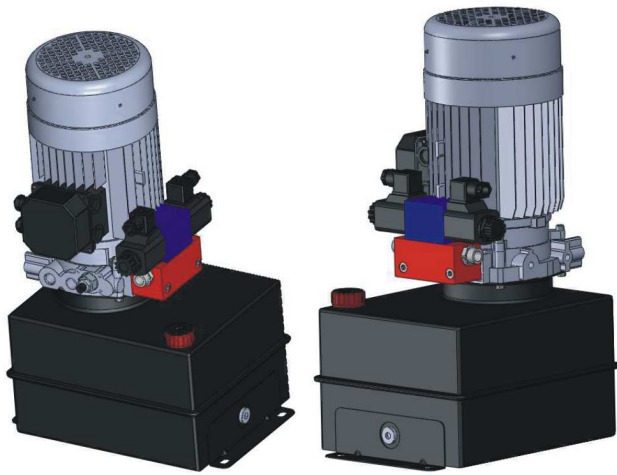
Hydraulic Circuit



Application - *POWER STEERING*

TYPICAL TYPE

- CAN PRESS



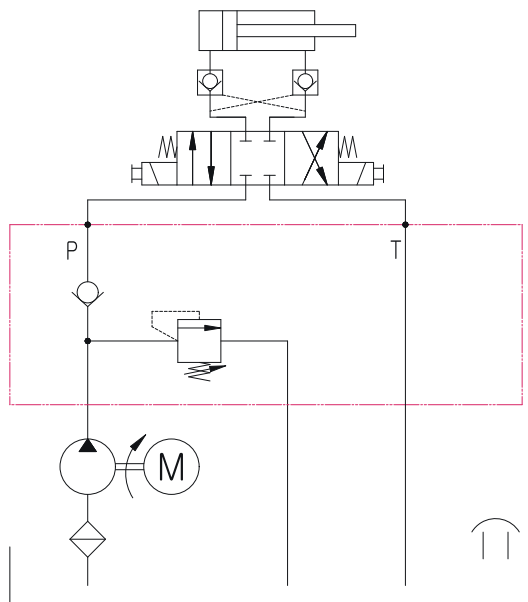
Description

20tons, 50tons even more powerful can press power unit.

From basic power up/power down functional power unit to additional function power unit is feasible.

With flexible sub-plate, customer's design is always acceptable.

Power Pack for *CAN PRESS*



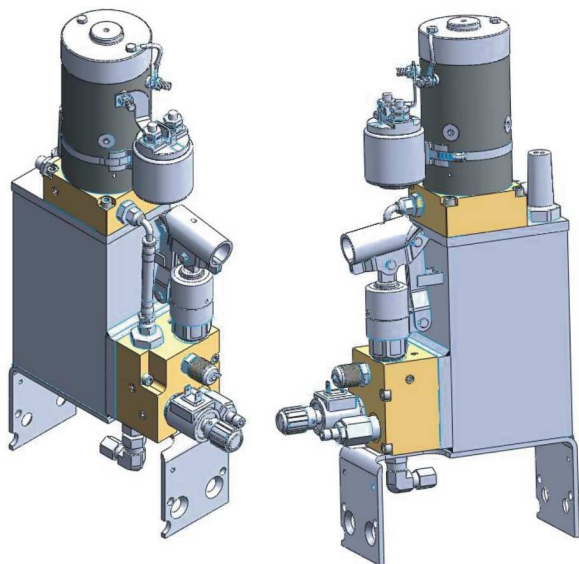
Hydraulic Circuit



Application - *CAN PRESS*

TYPICAL TYPE

- WHEEL CHAIR LIFT

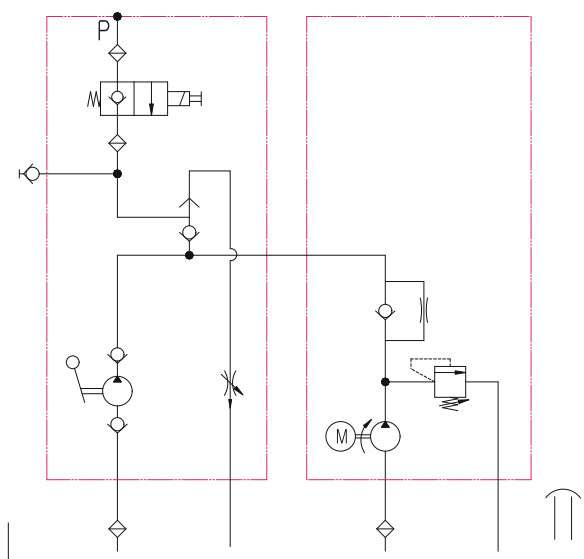


Description

Designed for power up/gravity down with emergency hand pump in case of power failure.

12V DC or 24V DC motor is available and wireless controller can be connected to this power pack for operator's convenience.

Power Pack for *WHEEL CHAIR LIFT*



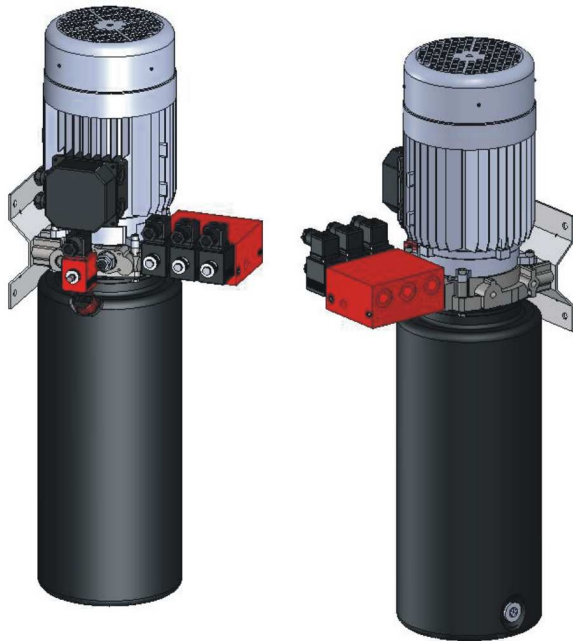
Hydraulic Circuit



Application - *WHEEL CHAIR LIFT*

TYPICAL TYPE

- 4 POST CAR LIFT



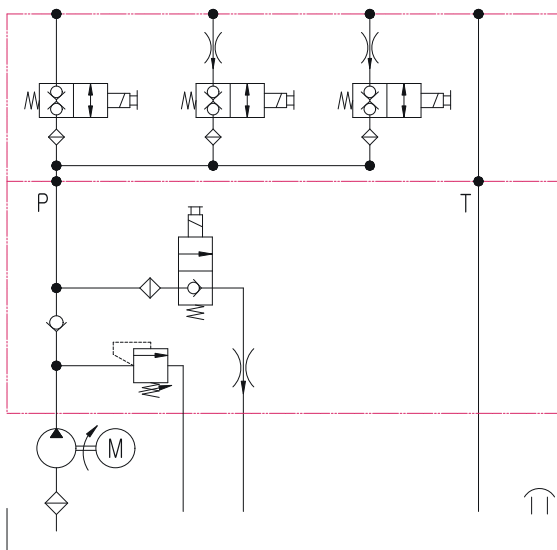
Description

Designed for 115V AC or 208-230V AC single phase power.

230-400V AC three phase power is available for triple single acting power pack.

The unit includes a lift-hold-gravity lower function and each function is independently operated.

Power Pack for 4 POST CAR LIFT



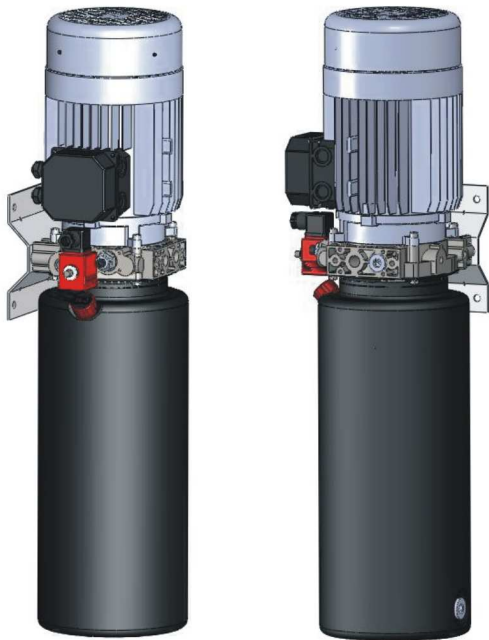
Hydraulic Circuit



Application - 4 POST CAR LIFT

TYPICAL TYPE

- 2 POST CAR LIFT



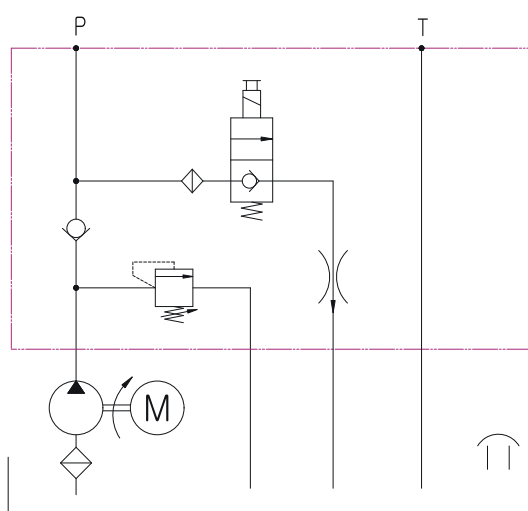
Description

Designed for smaller, low-rise auto hoist & can be mounted either horizontally or vertically.

A push button on the motor starts the unit to raise the vehicle on the lift.

To lower, a manually operated cartridge-style release valve is used for finger-tip control of lowering speed.

Power Pack for 2 POST CAR LIFT



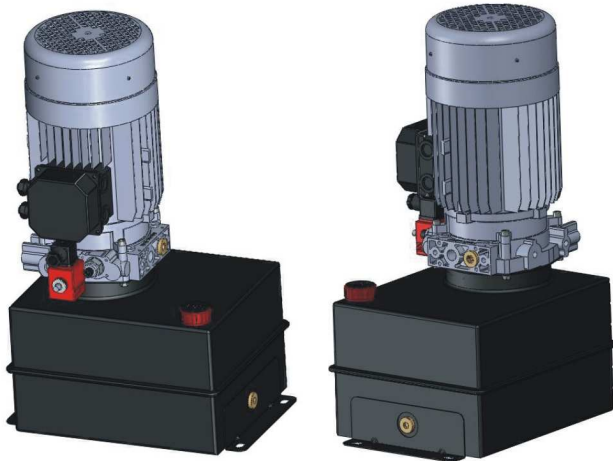
Hydraulic Circuit



Application - 2 POST CAR LIFT

TYPICAL TYPE

- SCISSOR LIFT



Description

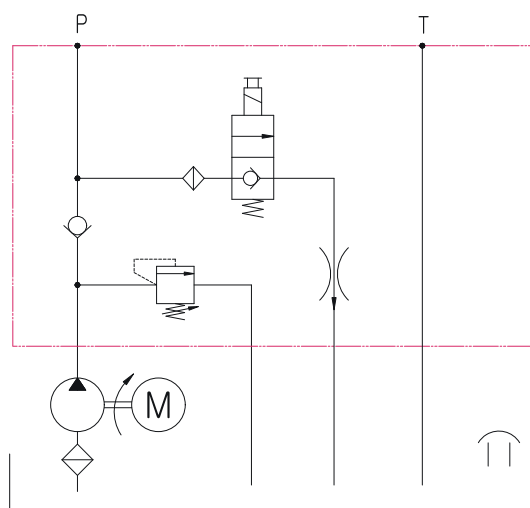
Designed for 110V, 220V (single phase) or 380V three phase AC power up/gravity down application.

In the off position, the unit holds steady.

Hydro-Tek brand wireless controller is optional.

A pressure compensated flow control valve keeps lowering speed constant regardless of load.

Power Pack for *SCISSOR LIFT*



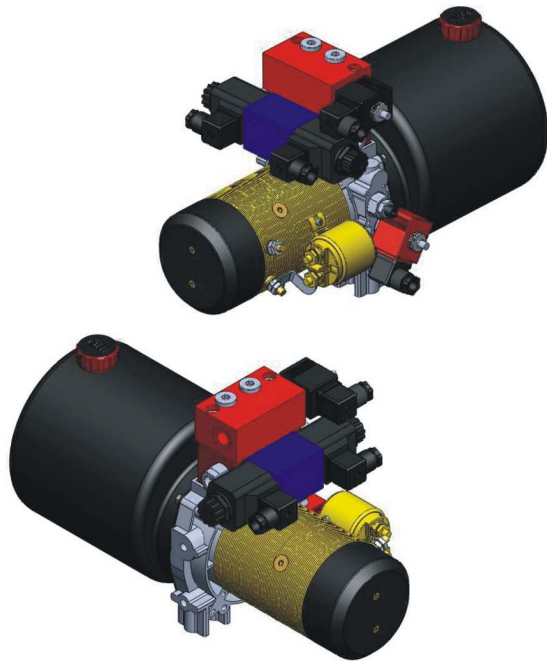
Hydraulic Circuit



Application - *SCISSOR LIFT*

TYPICAL TYPE

- TAIL LIFT ①

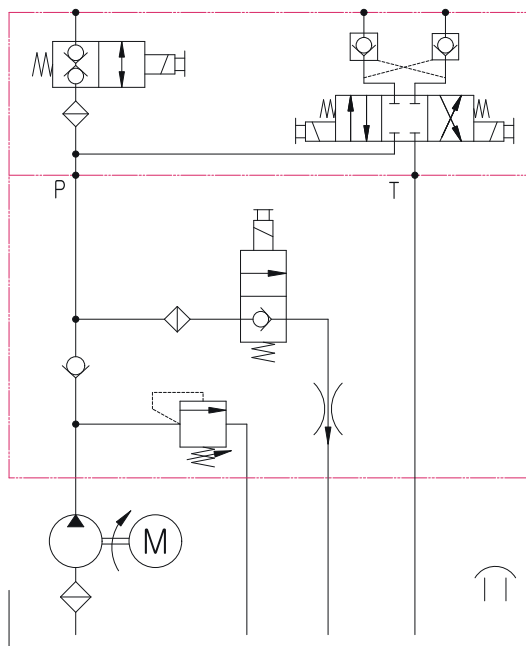


Description

Hydro-Tek manufacturers 12V and 24V DC power packs come in manual or solenoid-operated versions for basic One-single, one-double acting TAIL GATE system.

Four button hand control is available for many DC lift/hold/lower applications.

Power Pack for *TAIL LIFT* ①



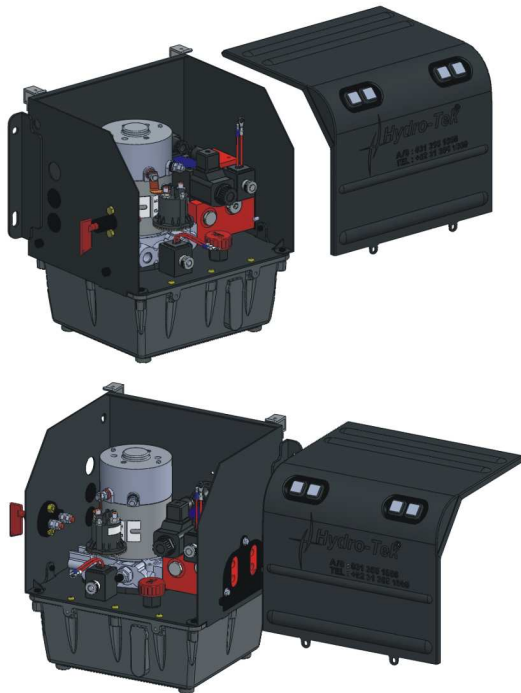
Hydraulic Circuit



Application - *TAIL LIFT* ①

TYPICAL TYPE

- TAIL LIFT ②



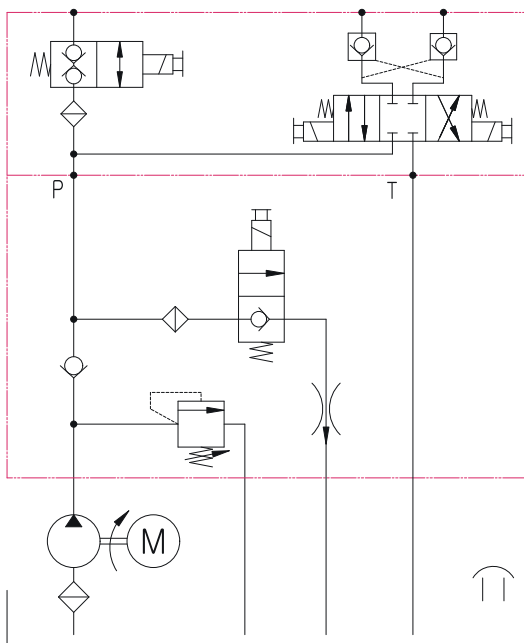
Description

Compact & light designed 12V and 24V DC power packs come in manual or solenoid-operated versions for One-single, one-double acting TAIL GATE system.

Four button hand control is available for many DC lift/hold/lower applications.

Material : Plastic

Power Pack for *TAIL LIFT ②*



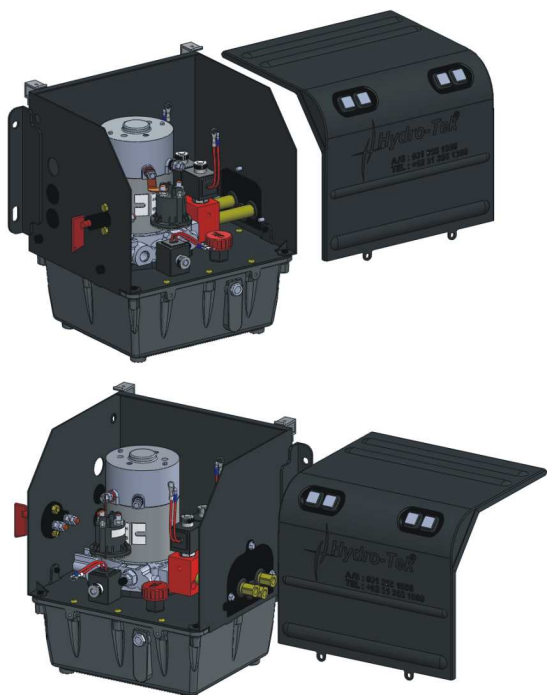
Hydraulic Circuit



Application - *TAIL LIFT ②*

TYPICAL TYPE

- TAIL LIFT ③



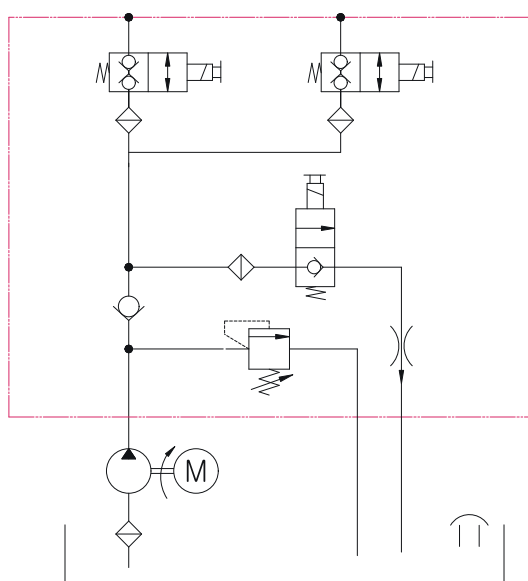
Description

Compact & light designed 12V and 24V DC power packs come in manual or solenoid-operated versions for dual single acting TAIL GATE system.

Four button hand control is available for many DC lift/hold/lower applications.

Material : Plastic

Power Pack for *TAIL LIFT* ③



Hydraulic Circuit

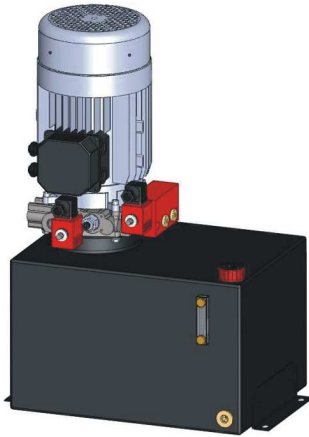


Application - *TAIL LIFT* ③

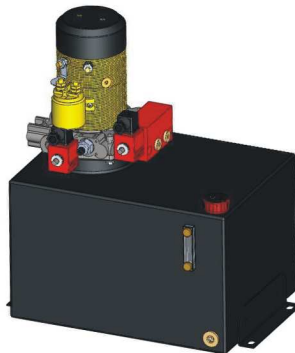
TYPICAL TYPE

- AERIAL WORK PLATFORM

AC Motor



DC Motor



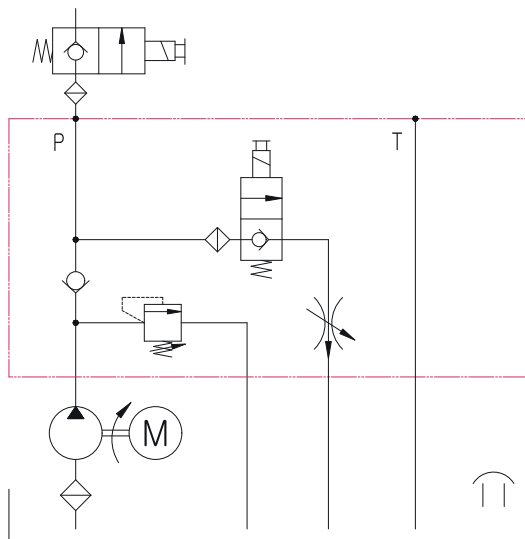
Description

Designed for use on 12V DC, 24V DC and AC operated.

Elevated work platform using a raise-hold & gravity down circuit includes.

Normally close valve to protect operators from run-on, Manual override to allow the platform to be lowered in case of power failure.

Power Pack for *Aerial Work Platform*



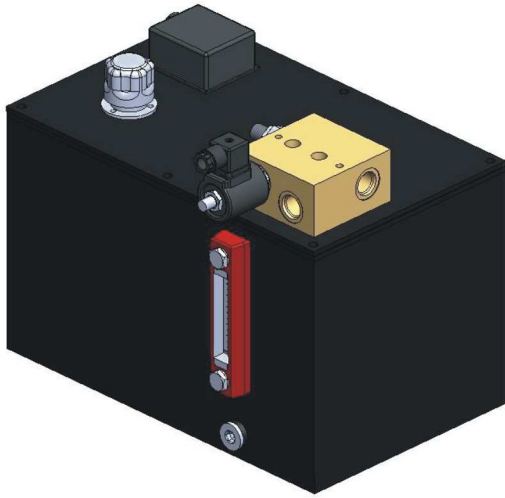
Hydraulic Circuit



Application - *Aerial Work Platform*

TYPICAL TYPE

- PLATFORM MAN LIFT



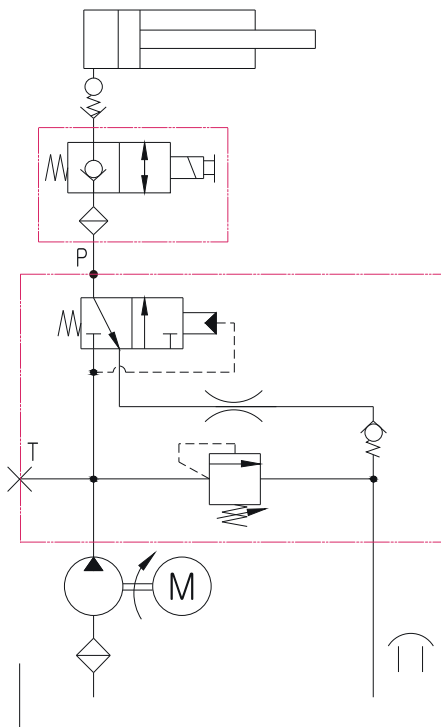
Description

Hydro-Tek designed submersible power unit for any of application in AC motor.

Quiet and clean work place need submersible power unit.

Three phase AC motor is provided. For DC motor power unit, please contact Hydro-Tek.

Submersed Power Pack for *Platform Man Lift*



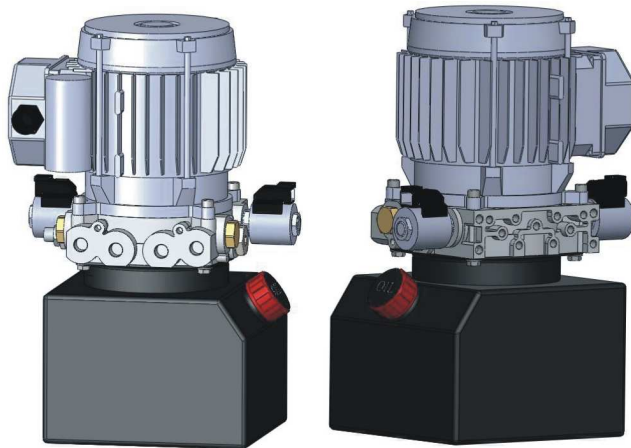
Hydraulic Circuit



Application - *Platform Man Lift*

TYPICAL TYPE

- SOLAR PANEL



Description

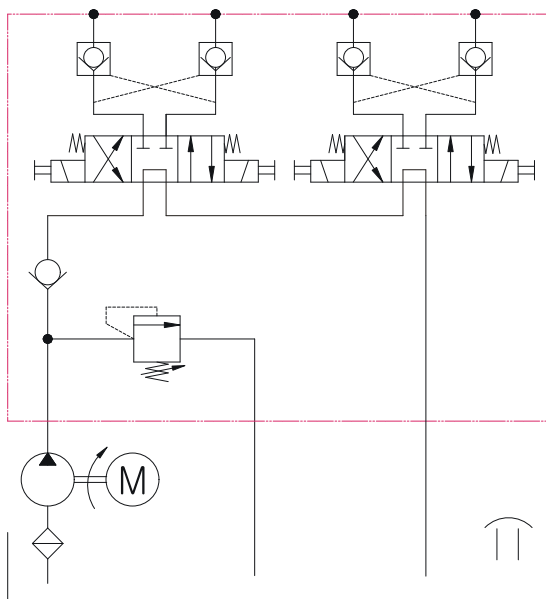
Designed for compact power unit for solar panel moving. 115V AC or 208-230V AC single phase power, 230-400V AC three phase power are available for two double acting power pack.

Also, DC power unit (12V, 24V) is available.

4 button controller for lift/hold/lower/left/right is available .

Hydro-Tek's sole design. (One sub-plate with two double acting performing valve)

Power Pack for *Solar Panel*



Hydraulic Circuit



Application - *Solar Panel*